



Red Kap® Industrial Cargo Short. PT66

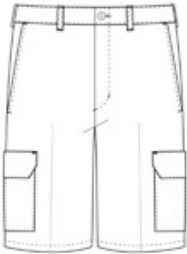


Built for the person who carries a lot of stuff, our IL50-strength Cargo Short has snap cargo pockets to pack what you need to get work done. Tested through 50 industrial launderer washes.

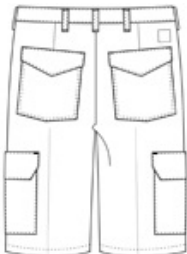
- 7.5-ounce, 65/35 poly/cotton twill with Touchtex PRO™ technology which provides breathable comfort lasting colors and stain resistance with an even softer feel
- TruBlack fabric resists fading wash after wash
- Requires minimal ironing thanks to a wrinkle-resistant finish
- Heavy-duty brass ratcheting zipper with button closure
- Two front pockets
- 12-inch inseam
- Two back patch pockets with spade pocket flaps and snap closure
- Two patch leg pockets with inverted center pleats, one-piece pocket flaps with mitered corners and two snap closures
- Industrial laundry friendly

CARE INSTRUCTIONS

Industrial Wash. Home Wash. Light soil wash.

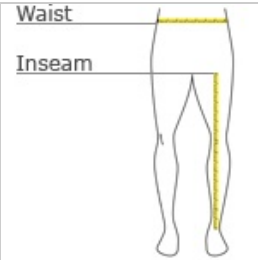


front



back

HOW TO MEASURE



WAIST
Measure around the smallest part of the natural waist.

INSEAM
Measure a similar style pant that fits well and is the desired length. Measure from the crotch seam to the hem.

COLOR INFORMATION

Please note: PMS code information is shown only when an exact match is available.



Black
PMS BLACK C



Khaki
PMS 2324C



Navy
PMS 532C