



# Mercer+Mettle® Double-Knit Full-Zip Hoodie MM3002



Not your basic hoodie, this streamlined design is a polished layer for work or play. Along with a full-coverage, three-panel hood, other features include front seaming, integrated pockets, self-banded cuffs and hem and matte black trims.

### Fabric+Weight

- 8.3-ounce, 100% double-knit polyester

### Features+Benefits

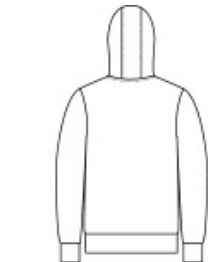
- Three-panel hood
- Front seaming
- Matte black zipper pull
- Integrated pockets
- Self-banded cuffs and hem

### CARE INSTRUCTIONS

Turn Garment Inside Out. Machine Wash Cold With Like Colors. Do Not Use Fabric Softener. Do Not Bleach. Tumble Dry Low. Remove Promptly. Cool Iron. If Necessary.

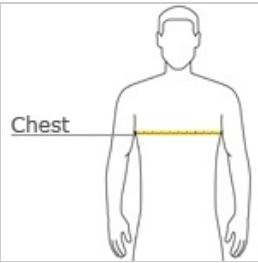


front



back

## HOW TO MEASURE



CHEST WIDTH  
Measure under the arm and around the fullest part of the chest with arms down, keeping tape horizontal.

## SIZE CHART

	XS	S	M	L	XL	2XL	3XL	4XL
Chest	32-34	35-37	38-40	41-43	44-47	48-51	52-56	57-61

## COLOR INFORMATION

Please note: PMS code information is shown only when an exact match is available.



Anchor Grey  
PMS 426C



Deep Black  
PMS BLACK C



Night Navy  
PMS 532C