



Port & Company® Women's Long Sleeve Fan Favorite V-Neck Tee. LPC450VLS



You'll be the biggest fan around of this 100% ring spun cotton tee.

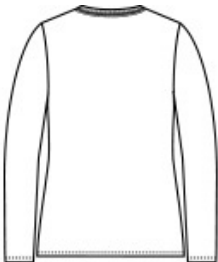
- 4.5-ounce, 100% ring spun cotton, 30 singles
- 90/10 cotton/poly (Athletic Heather)
- 50/50 cotton/poly (Dark Heather Grey)
- Women's fashion fit
- Removable tag for comfort and relabeling

CARE INSTRUCTIONS

Machine wash cold. Inside out with like colors. Only non-chlorine bleach when needed. Tumble dry low. Do not iron.



front



back

HOW TO MEASURE



BUST
Measure under the arm and around the fullest part of the bust with arms down, keeping tape horizontal.

SIZE CHART

	XS	S	M	L	XL	XXL	3XL	4XL
Size	2	4/6	8/10	12/14	16/18	20/22	24/26	28/30
Bust	32-34	35-36	37-38	39-41	42-44	45-47	48-51	52-55

COLOR INFORMATION

Please note: PMS code information is shown only when an exact match is available.

Athletic Heather PMS COOL GRAY 7C	Bright Red PMS 186C	Dark Heather Grey PMS 7540C	Forest Green PMS 7736C	Jet Black PMS BLACK C	New Pink PMS 190C	Team Cardinal PMS 201C	Team Navy PMS 2766C	Team Purple PMS 669C	True Royal PMS 7687C	White