

PORT AUTHORITY

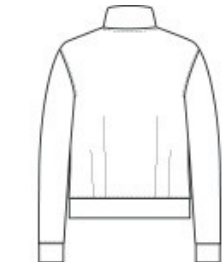
Port Authority® Women's C-FREE® Double Knit Full-Zip LK881



- 7.7-ounce, 89% recycled polyester/11% spandex interlock knit (solids)
- 7.7-ounce, 81% recycled polyester/8% polyester/11% spandex interlock knit (heathers)
- This product's carbon footprint has been measured and reduced through a combination of preferred materials and investing in carbon offset projects through the ClimeCo Certified Product™ Program
- Snag-resistant
- Moisture-wicking
- UPF rating of 50+
- Slight drop shoulder
- Dyed-to-match, recycled, molded zipper with dyed-to-match rubber-tipped pull
- Angled front pockets with stitching detail
- Self-banded cuffs and hem
- Pleats at back hem
- Tag-free label



front



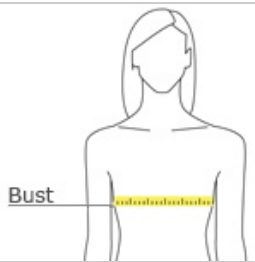
back

Due to the nature of 100% polyester performance fabrics, special care must be taken throughout the printing process.

CARE INSTRUCTIONS

Machine Wash Cold With Like Colors. Do Not Use Fabric Softener. Only Non-Chlorine Bleach When Needed. Tumble Dry Low. Remove Promptly. Cool Iron If Necessary.

HOW TO MEASURE



BUST

Measure under the arm and around the fullest part of the bust with arms down, keeping tape horizontal.

SIZE CHART

	XS	S	M	L	XL	XXL	3XL	4XL
Size	2	4/6	8/10	12/14	16/18	20/22	24/26	28/30
Bust	32-34	35-36	37-38	39-41	42-44	45-47	48-51	52-55

COLOR INFORMATION

Please note: PMS code information is shown only when an exact match is available.



Deep Black
PMS BLACK C



Grey Steel Heather
PMS 4287C



Smoke Grey



True Navy
PMS 533C