

SPORT-TEK®

Sport-Tek® Women's Dri-Mesh® Pro Polo. L474



Zoned ventilation panels combine with our ultra-dry mesh moisture-wicking technology to create our coolest, most breathable polo. Stretch gussets add stretch and extra mobility.

- 4-ounce, 100% polyester mini pique on body
- 4.4-ounce, 94/6 poly/spandex stretch mesh at raglan sleeves, back and side panels
- Tag-free label
- Flat knit collar
- 5-button placket with dyed-to-match buttons
- Raglan sleeves

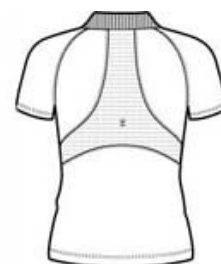
**Due to the nature of 100% polyester performance fabrics, special care must be taken throughout the screen printing process.*

CARE INSTRUCTIONS

Machine wash cold with like colors, only non-chlorine bleach when needed, tumble dry low, do not use softener, remove promptly, cool iron if necessary.

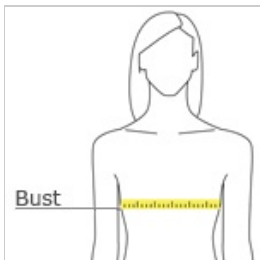


front



back

HOW TO MEASURE



BUST

Measure under the arm and around the fullest part of the bust with arms down, keeping tape horizontal.

SIZE CHART

	XS	S	M	L	XL	XXL	3XL	4XL
Size	2	4/6	8/10	12/14	16/18	20/22	24/26	28/30
Bust	32-34	35-36	37-38	39-41	42-44	45-47	48-51	52-55

COLOR INFORMATION

Please note: PMS code information is shown only when an exact match is available.



Black
PMS BLACK C



Carolina Blue
PMS 646C



Dark Green
PMS 2217C



Engine Red
PMS 703C



Maroon
PMS 504C



Navy
PMS 5255C



Pink Raspberry
PMS 7425C



Royal
PMS 654C



Steel
PMS C1 GY 11 C



White