

SPORT-TEK®

Sport-Tek® Repeat 1/2-Zip Long Sleeve Hooded Jacket JST488



Go out to the game in this moisture-wicking hooded jacket.

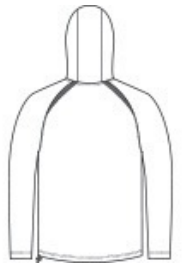
- 3.5-ounce, 90/10 poly/spandex w ith PosiCharge® technology
- 100% poly tricot mesh insert
- Snag-resistant
- Tag-free label
- Attached hood
- Contrast tonal mesh panels at shoulder and under arms
- Front pouch pockets
- Adjustable fit at hem with side toggles

CARE INSTRUCTIONS

Machine Wash Cold With Like Colors. Do Not Use Fabric Softener. Do Not Bleach. Tumble Dry Low. Remove Promptly. Cool Iron If Necessary.



front



back

HOW TO MEASURE



CHEST WIDTH

Measure under the arm and around the fullest part of the chest with arms down, keeping tape horizontal.

SIZE CHART

| | XS | S | M | L | XL | 2XL | 3XL | 4XL |
|-------|-------|-------|-------|-------|-------|-------|-------|-------|
| Chest | 32-34 | 35-37 | 38-40 | 41-43 | 44-46 | 47-49 | 50-53 | 54-57 |

COLOR INFORMATION

Please note: PMS code information is shown only when an exact match is available.



Black
PMS BLACK C



Deep Red
PMS 201C



Forest Green
PMS 553C



Iron Grey
PMS 7540C



True Navy
PMS 533C



True Royal
PMS 7686C



White