



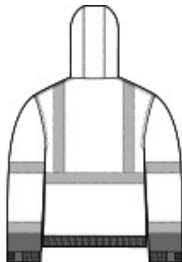
CornerStone® ANSI 107 Class 3 Economy Waterproof Insulated Bomber Jacket CSJ500



- 100% polyester w oven 300-denier oxford shell with durable w ater-repellent (DWR) finish
- 5.2-ounce, 100% polyfill insulation, box diamond quilted body and sleeve lining
- Black bottom front and low er sleeves for a cleaner appearance
- Fabric w aterproof rating: 5000MM
- Fully seam-sealed
- Adjustable, zip-removable rain hood w ith hook and loop closure and toggles
- Durable, reflective 2-inch tape meets ANSI 107 requirements and provides 360-degree visibility
- Full-length exterior storm flap
- Left chest bellows pocket
- Tw o open low er front pockets
- Molded center front zippered closure
- Elastic cuffs
- Elastic hem
- Decoration access pocket
- This garment must be fully zipped to be in compliance w ith ANSI 107 standards



front

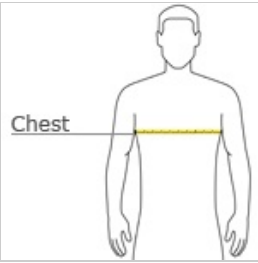


back

CARE INSTRUCTIONS

Machine Wash Cold With Like Colors. Only Non-Chlorine Bleach When Needed. Do Not Use Fabric Softener. Tumble Dry Low . Do Not Iron.

HOW TO MEASURE



CHEST WIDTH
Measure under the arm and around the fullest part of the chest w ith arms dow n, keeping tape horizontal.

SIZE CHART

	S	M	L	XL	2XL	3XL	4XL	5XL
Chest	35-37	38-40	41-43	44-46	47-49	50-53	54-57	58-60

COLOR INFORMATION

Please note: PMS code information is shown only when an exact match is available.



Safety Orange



Safety Yellow