



Nike Women's Gym Vintage Full-Zip Hoodie CN9402



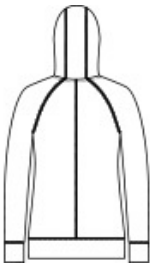
This hoodie has an old-school gym look with new -school style. The design includes an oversized, three-panel hood with draw cords, raglan sleeves, front pouch pockets and open cuffs. The contrast heat transfer Sw oosh design trademark is on the right chest. Made of 4.7-ounce, 60/40 organically, sustainably-grown cotton/recycled polyester.

CARE INSTRUCTIONS

Machine Wash Cold (30c). Wash Inside Out. Wash with Like Colors. Do Not Use Softeners. Do Not Use Bleach. Tumble Dry Low. Do Not Iron. Do Not Dry Clean.

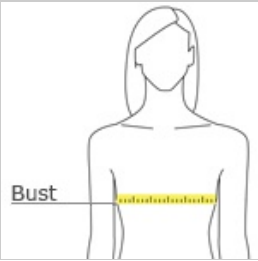


front



back

HOW TO MEASURE



BUST

Measure under the arm and around the fullest part of the bust with arms down, keeping tape horizontal.

SIZE CHART

	S	M	L	XL	2XL
Size	4/6	8/10	12/14	16/18	20/22
Bust	32 1/2-35 1/2	35 1/2 - 38	38-41	41-44 1/2	44 1/2 - 48 1/2

COLOR INFORMATION

Please note: PMS code information is shown only when an exact match is available.



Team Anthracite
PMS 7540C



Team Black
PMS BLACK C



Team Navy
PMS 533C



Team Royal
PMS 7687C